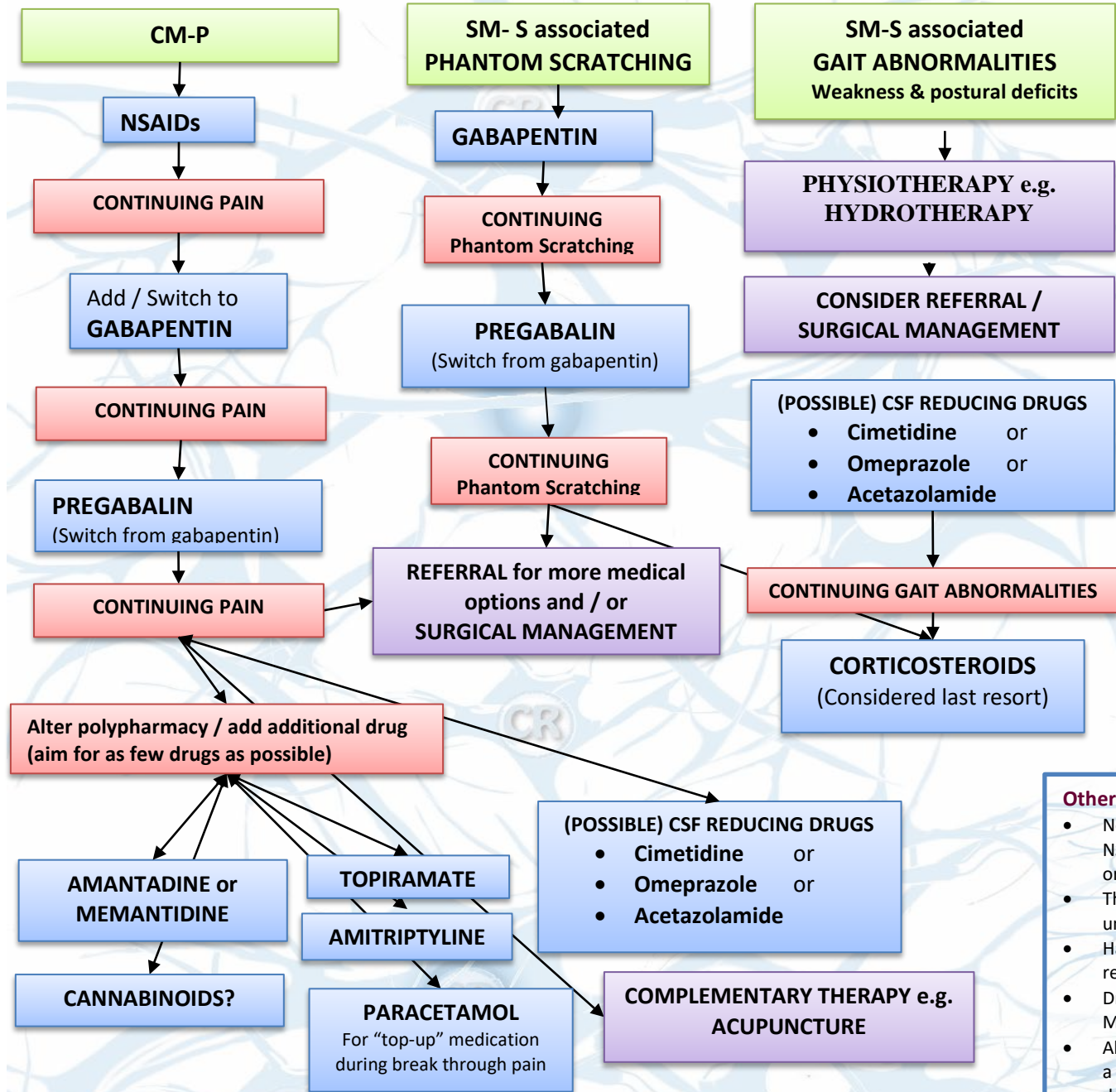


MEDICAL MANAGEMENT OF CANINE CHIARI-LIKE MALFORMATION ASSOCIATED PAIN (CM-P) / SYMPTOMATIC SYRINGOMYELIA (SM-S)



Clinical signs

CM-P - vocalization, head scratching/rubbing, reduced activity, reduced stairs / jumping ability, spinal pain, altered emotional state (behavioural change to more timid, anxious or aggressive), sleep disturbance and touch aversion

SM-S - phantom scratching; gait abnormalities (weakness and postural deficits or reduced ability to know where limb is in space) and scoliosis (no medical options for scoliosis)

- Drug dosages**
- **Acetazolamide** see formulary for full details and contraindications; short term use only
 - **Amantadine** 3-5mg/kg PO SID
 - **Amitriptyline** – see formulary for details and contraindications
 - **Cimetidine** 5-7mg/kg PO TID
 - **Corticosteroids** - Prednisolone / methylprednisolone 0.5mg/kg PO SID then decrease to lowest possible ideally alternate day dose that controls signs)
 - **Gabapentin** 10mg/kg PO BID (can increase up to 20mg/kg TID)
 - **Memantine** see formulary for full details and contraindications
 - **NSAIDs** (non-steroidal anti-inflammatory drugs) – see compendium or formulary
 - **Omeprazole** 0.5-1.5mg/kg PO SID
 - **Paracetamol** 10mg/kg on as per needed basis up to three times daily
 - **Pregabalin** 5mg/kg PO BID / TID
 - **Topiramate** 10mg/kg TID

- Other Points to consider**
- None of drugs listed are licensed for veterinary medicine (with exception of NSAIDs and cimetidine). No drug is licensed with a specific indication for CM-P or SM-S. For more information regarding this read [here](#).
 - The effect of omeprazole and cimetidine on cerebrospinal fluid production is unproven, the benefit anecdotal and recently disputed by scientific articles.
 - Haematology & biochemistry should be monitored at least every 12 months if receiving long-term medication
 - Drugs are given a 2-4 week trial to assess effectiveness except Amantadine / Memantine and Amitriptyline which may require longer.
 - All drugs should only be prescribed by a veterinary surgeon who should refer to a formulary for drug adverse effects / drug interactions / titration and tapering details.